

NOTE
578V 5A USES 2
RESISTORS IN SERIES

578V 5A	310	250
250V 5A	260	125
139V 5A	160	125
120V 5A	160	125
55V 5A	160	125
VOLTAGE	A	B

COAST ELECTRICAL INDUSTRIES
A. C. N. 001 936 456
CORNER KENNY & WEST STREETS
WOLLONGONG 2500 AUSTRALIA
PTY. LTD.

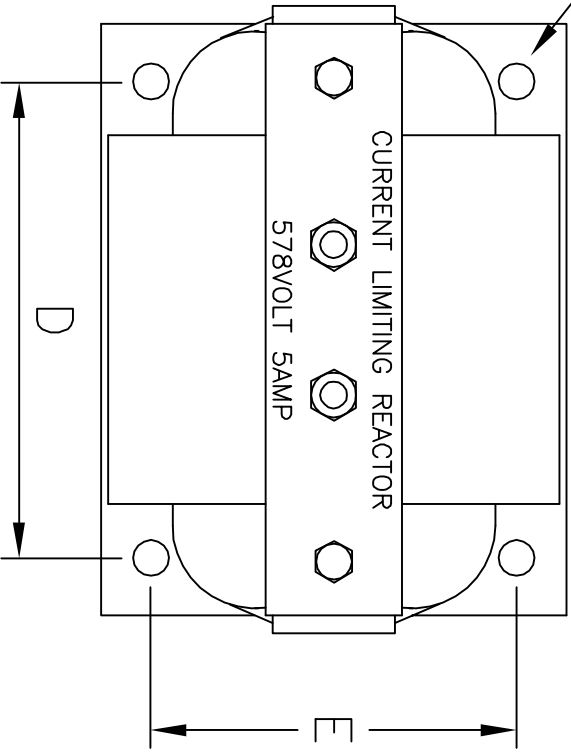
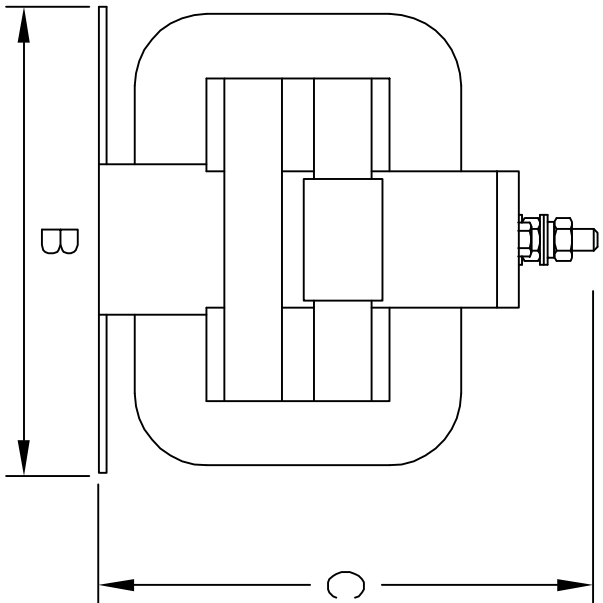
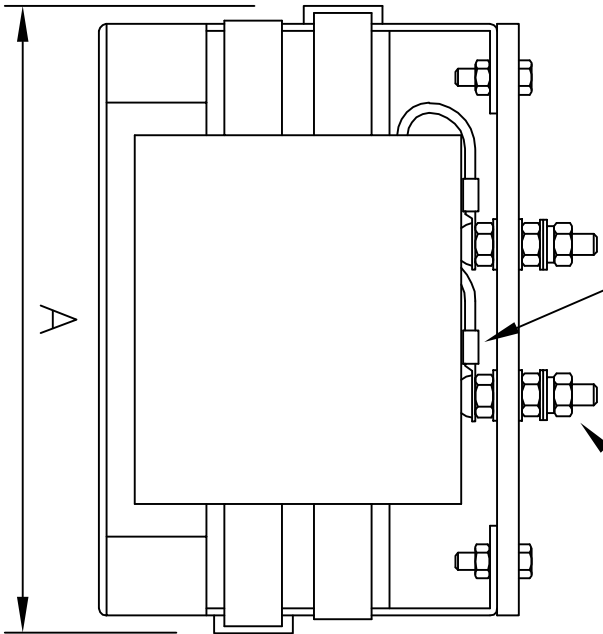
CURRENT LIMITING RESISTOR
120V, 250V, 578V - 5 AMP

REVISION #2	REVISION #1	DRAWN RF	DATE 2/05/06	DRAWING #	REV.
		CHK.	SCALE N.T.S.	898	

FLEXIBLE CABLE (V90) FROM WINDING TO
PRE-INSULATED CRIMP LUG (CSA NOT
LESS THAN THE CONDUCTOR)

6mm NICKEL PLATED BRASS
STUD TERMINALS

6mm
CLEARANCE



① TUNNEL TERMINALS
(NOT STUD TERMINALS,)

1905V 5A	260	170	230	190	125	15.0
578V 5A	175	130	145	133	102	7.3
250V 5A	160	125	145	120	102	6.3
120V 5A	135	100	110	90	76	3.0
55V 5A ①	110	80	87	65	65	1.8
A	B	C	D	E	MASS	

COAST ELECTRICAL INDUSTRIES
A. C. N. 001 936 456
CORNER KENNY & WEST STREETS
WOLLONGONG 2500 AUSTRALIA

CURRENT LIMITING REACTORS

REVISION #2	REVISION #1	DRAWN	DATE	DRAWING #	REV.
	26/7/99	RF	20/5/97	585	1
	FLEXIBLE CABLES	CHK:	SCALE	N.T.S.	